

World Leader in Sophisticated Packaging Systems



MSL22 Manual Side Drive Low Profile

series overview

The BestPack® MSL is an operator-fed, adjustable, carton-sealing machine designed to cater to the needs of applications with cartons of low height.

The MSL22 taper can seal cartons that are 2.3" high rather than the typical 3.9" height of other MS series tapers.

All systems incorporate our exclusive pop out pressure sensitive "High Speed" tape heads with patented tab adjustment.

major features

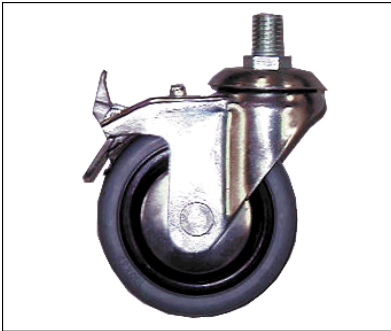
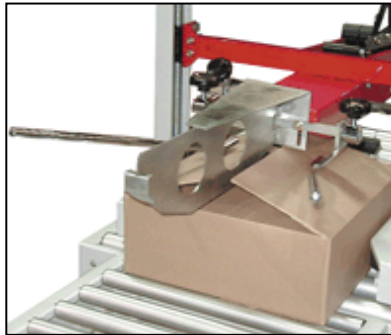
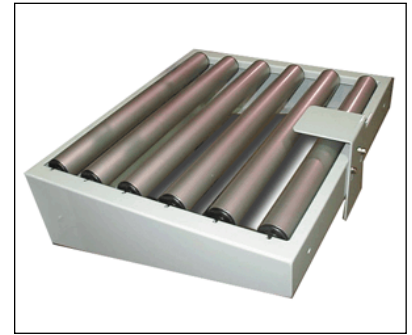
- Two Side Belts
- Adjustable Bed Height from 24.5" to 30.0"
- Width/Height Adjustment on either side of machine
- Extra 4" Carton Height Available on Upper Assembly
- Box Top Compression Unit
- Tape Roll Lengths: 1000yd, 1500yd, 2000yd.
- Heavy Duty Frame
- UL Approved Electrical Parts
- 3" Model Capable of Interchanging 2" or 3" Tape Heads

standard features

- Exclusive Pop-out pressure sensitive "high speed" tape head with patented tab adjustment and noise reduction arm
- Operation Manual and Spare Parts Kit

World Leader in Sophisticated Packaging Systems**optional features**

- *High Speed Motor Upgrade (Up to 125 ft./mm.)*
- *Motorized Height and/or Width Adjustment*
- *Interlock Safety Gates*
- *Stainless Steel*

**Locking Castors****3 Flap Folder****Infeed/Exit Conveyor w/ Stabilizer****machine & carton specifications**

- *Power Requirements: 110 Volts 60 Hz*
- *Speed: Up to 40 cartons/minute*
- *Tape Head: Standard: 2"; Available: 3"*

series comparison table

Model	Machine Dimensions	Carton Range	Cartons/Min.	Weight (lbs.)
MSL22-2 2" TapeHead	(57.3") x (36.0") x (55.5")	(6.0"-U) x (5.7"-21.6") x (2.3"-20.5")	Up to 40	400
MSL22-3 3" TapeHead	(57.3") x (36.0") x (55.5")	(6.0"-U) x (6.7" - 21.6") x (2.3"-20.5")	Up to 40	400

* All specifications capable of customization or subject to change without notice